

Setup PIN EC KB9012 với RT809F

Watch This Resource

- **Overview**

1. K45VD EC KB9012QF A3

| Column 1 | Column 2 | Column 3 | Column 4 |
|------------------|----------|----------|---------------|
| Tên/Ký hiệu | KB9012 | RT809F | JKB1/KEYBOARD |
| EDI_CS /KSI4 | 59 | 5 | 15 |
| EDI_CLK /KSI5 | 60 | 10 | 19 |
| EDI_DIN /KSI6 | 61 | 9 | 16 |
| EDI_D0 /KSI7 | 62 | 6 | 17 |
| TP_PLL_Lock/KS03 | 42 | 8 | 22/GND |
| | | 12 | |

2.

G480_E530_E430 EC KB9012QF A3

| Column 1 | Column 2 | Column 3 | Column 4 |
|------------------|----------|----------|---------------|
| Tên/Ký hiệu | KB9012 | RT809F | JKB1/KEYBOARD |
| EDI_DS /KSI4 | 59 | 5 | 5 |
| EDI_CLK /KSI5 | 60 | 10 | 6 |
| EDI_DIN /KSI6 | 61 | 9 | 3 |
| EDI_D0 /KSI7 | 62 | 6 | 2 |
| TP_PLL_Lock/KS03 | 42 | 8 | 18, 32/GND |
| | | 12 | |

3.

Toshiba L40-A LA-9862P. kb9012QF-A3

| Column 1 | Column 2 | Column 3 | Column 4 | |
|------------------------|----------|----------|---------------|-----------------|
| Tên/Ký hiệu | KB9012 | RT809F | JKB1/KEYBOARD | Chú ý |
| EDI_CS /KS14 | 59 | 5 | 9 | PIN 5 RT809F -> |
| EDI_CLK /KS15 | 60 | 10 | 7 | Nối PIN 10 -> 7 |
| EDI_DIN /KS16 | 61 | 9 | 6 | Nối PIN 9 RT809 |
| EDI_DO /KS17 | 62 | 6 | 12 | Nối PIN 6 RT809 |
| TP_PLL_Lock/KSO3 /KS03 | 42 | 8 | 24 | Nối PIN 8 RT809 |
| | | 12 | | Nối PIN 12 RT80 |

4.

Dell 15R-3537, 15R-5537 (LA-9982P)

| Column 1 | Column 2 | Column 3 | Column 4 | Column 5 |
|-------------|----------|----------|---------------|---------------------------|
| Tên/Ký hiệu | KB9012 | RT809F | JKB1/KEYBOARD | Chú ý |
| KS14 | 59 | 5 | 27 | Nối PIN 5 RT809F -> 27 KE |
| KS15 | 60 | 10 | 25 | Nối PIN 10 RT809F -> 25 K |
| KS16 | 61 | 9 | 28 | Nối PIN 9 RT809F -> 28 KE |
| KS17 | 62 | 6 | 29 | Nối PIN 6 RT809F -> 29 KE |
| KS03 | 42 | 8 | 26 | Nối PIN 8 RT809F -> Mass |
| | | 12 | | Nối PIN 12 RT809F -> 3.3V |

5.

G480 Y480_QIWGX_LA-7981P

| Column 1 | Column 2 | Column 3 | Column 4 |
|-----------------|-----------------|-----------------|-----------------|
| Tên/Ký hiệu | KB9012 | RT809F | JKB1/KEYBOARD |
| KS14 | 59 | 5 | 5 |
| KS15 | 60 | 10 | 6 |
| KS16 | 61 | 9 | 3 |
| KS17 | 62 | 6 | 2 |
| KS03 | 42 | 8 | 18 |
| | | 12 | |

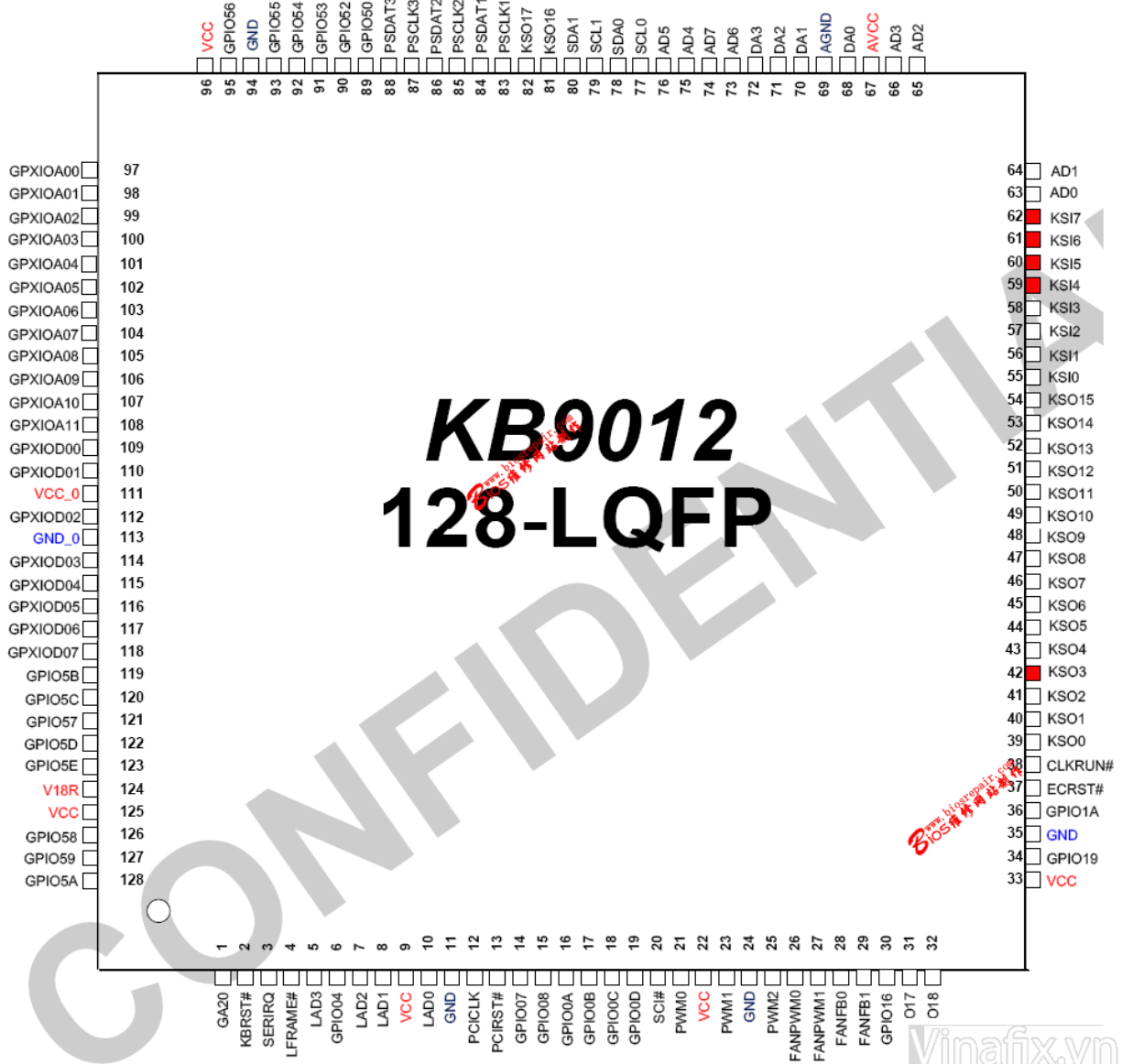
6.

G480 Y480_QIWGX_LA-7981P JKB2

| Column 1 | Column 2 | Column 3 | Column 4 |
|-----------------|-----------------|-----------------|-----------------|
| Tên/Ký hiệu | KB9012 | RT809F | JKB1/KEYBOARD |
| KS14 | 59 | 5 | 20 |
| KS15 | 60 | 10 | 19 |
| KS16 | 61 | 9 | 22 |
| KS17 | 62 | 6 | 23 |
| KS03 | 42 | 8 | 7 |
| | | 12 | |

7.

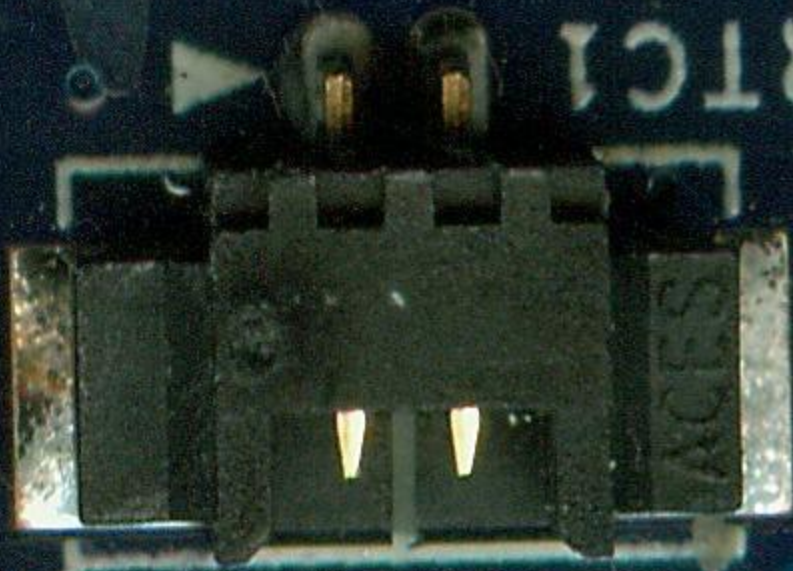
Lenovo ThinkPad Edge S430 - Compal QILP2 - LA-8261P



www.hbsemi.com
HB 805 瑞泰半导体

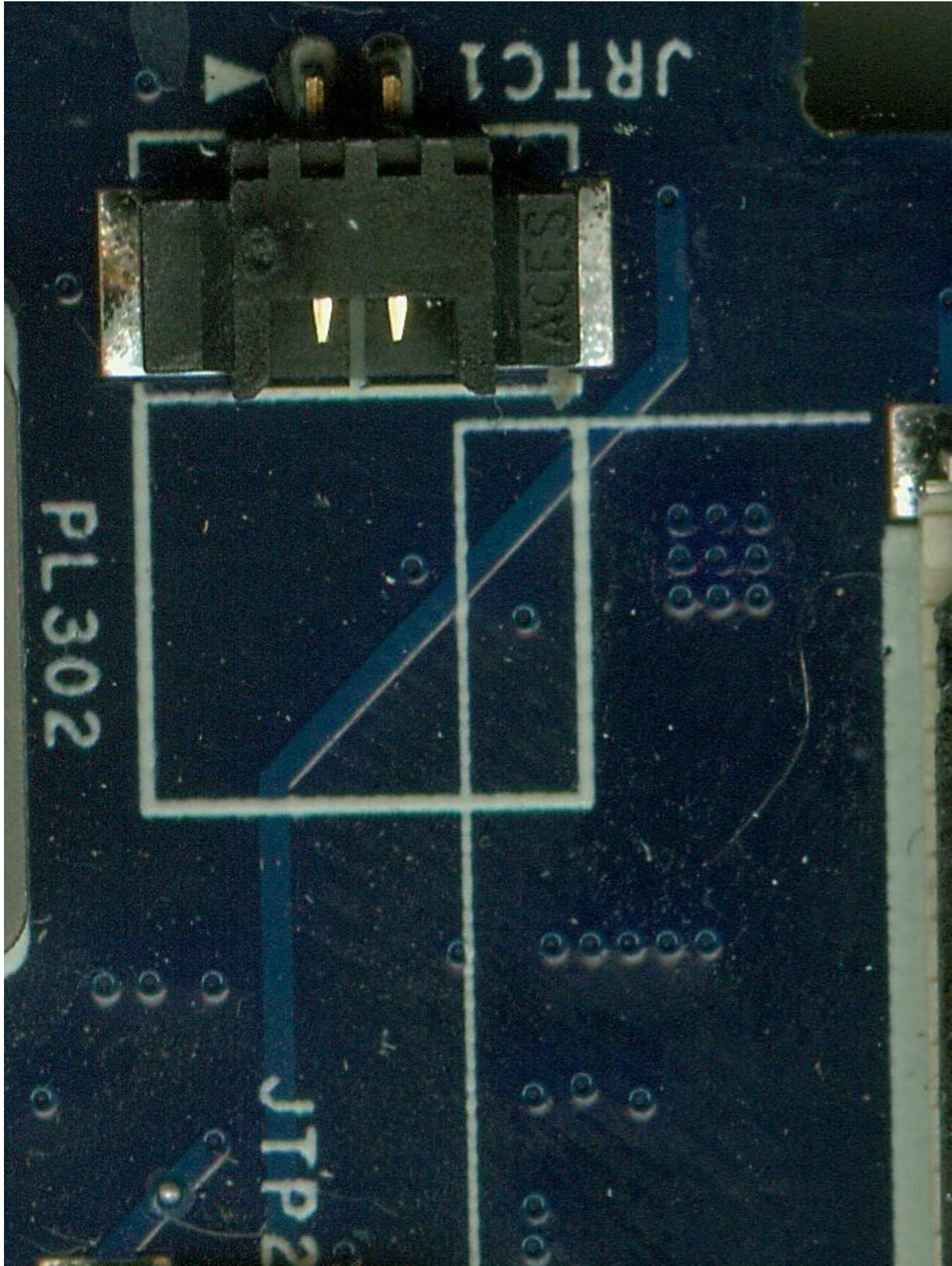
Vinafix.vn

JRTC1

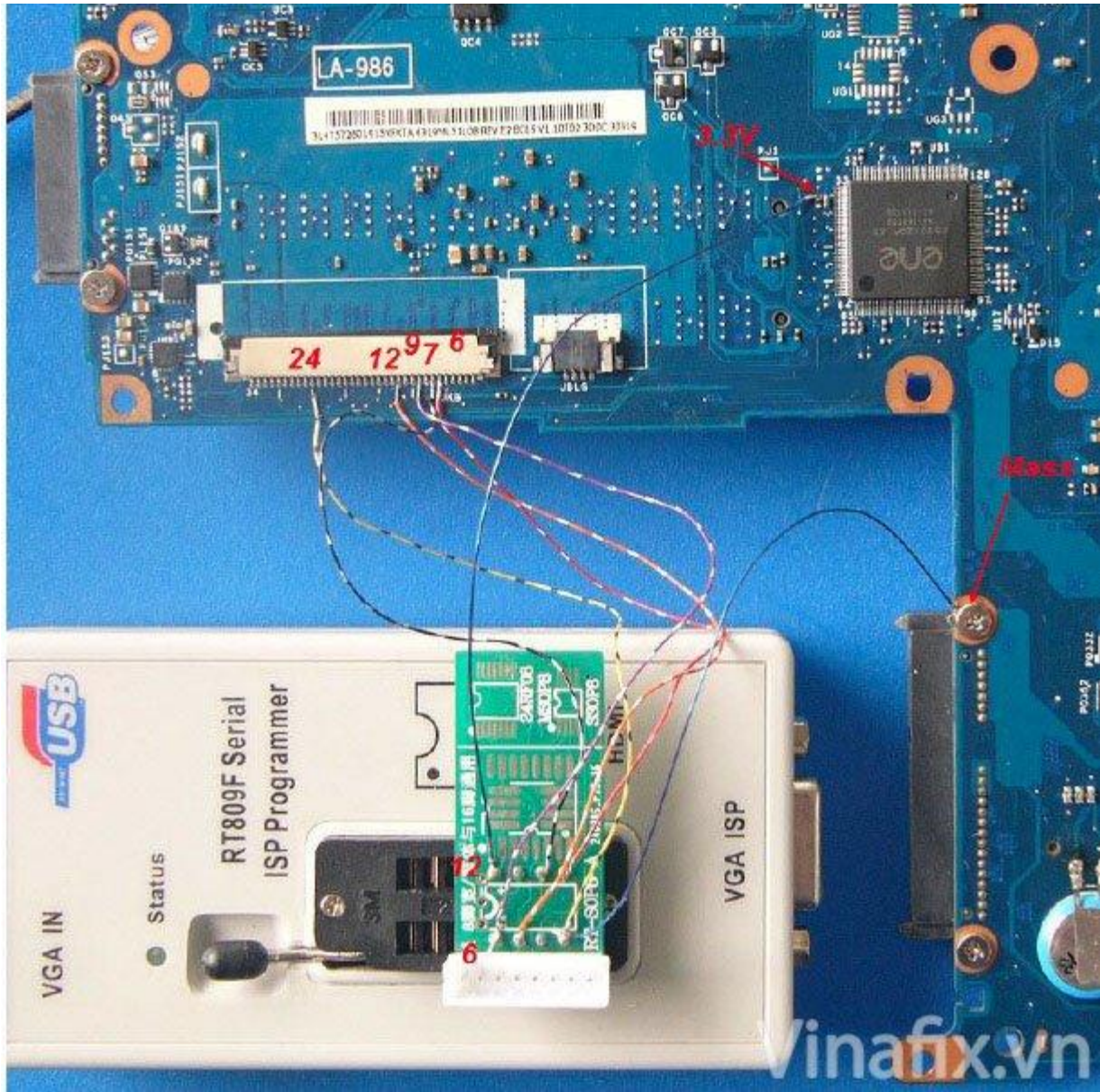


PL302

JTP2



Demo:



LA-8862P

